



## TRUE RMS 600 A SOLAR CLAMP METER

# FLIR CM65™

The CM65 is a rugged clamp meter designed to meet the challenges of solar installation, maintenance, and repair. This clamp meter comes with quick-connect MC4 test leads that improve the accuracy and safety of DC voltage measurements on solar panel strings and inverters. With the CM65, you can validate AC output and inverter efficiency and then store readings to the internal memory. Share data wirelessly via METERLiNK® or monitor measurements live on a smartphone running the FLIR Tools® mobile app. Photovoltaic (PV) installers can trust the CM65 as their go-to tool for accelerating and simplifying photovoltaic panel testing on new and existing solar panels.

[www.flir.com/CM65](http://www.flir.com/CM65)



### ACCURACY FOR ELECTRICAL AND SOLAR APPLICATIONS

The precision testing capabilities you need to get the job done right the first time

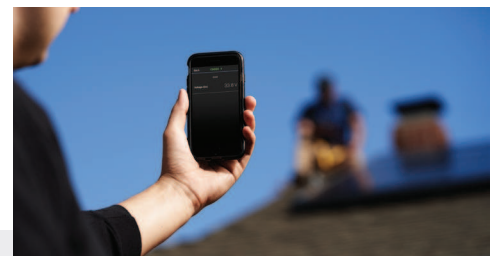
- Trust AC voltage and current measurements from inverters and mains are accurate with True RMS
- Eliminate errors from residual ghost voltage using LoZ (low impedance) mode
- Get sharp  $\pm 1.5\%$  accuracy when taking AC and DC current readings
- Capture the smallest voltage fluctuations when calibrating equipment using the CM65's millivolt function



### TOOLS YOU NEED TO WORK FASTER & SMARTER

This full-featured clamp meter with solar industry-standard connectors helps you pinpoint trouble fast

- Reduce the time needed for live/dead testing with included MC4 test leads
- Gain quick insights with Data Hold, Min/Max readings, and relative mode to zero the meter
- Troubleshoot string connections and components with a Continuity test mode
- Measure resistance, frequency and temperature
- Easily clamp around wires with the generous jaw (30 mm) and ergonomic design



### THE RIGHT TECH TO SIMPLIFY YOUR WORKFLOW

The CM65 is packed with tools to help you validate testing, document readings, and share results

- Take measurements, document results, and then share them on the go
- Identify trends and anomalies by data logging directly to the internal memory
- View readings right on your mobile device using the CM65's METERLiNK® and the FLIR Tools® Mobile app –on the roof, on the ground, or anywhere on a job site

## SPECIFICATIONS

### Basic measurement capabilities

Safety category rating	CAT IV-600 V, CAT III-1000 V
True RMS	Yes

### Features

Data hold	Yes
Min/Max	Yes
Relative DC zero	Yes
LoZ mode (auto range)	Yes
VFD	Yes
Jaw size	30 mm (1.1 in) max

Measurement and analysis	Range & resolution	Basic accuracy
--------------------------	--------------------	----------------

AC current	60.00, 600.0 A	±1.5%
DC current	60.00, 600.0 A	±1.5%
AC voltage	60.00, 600.0, 1000 V	±0.7%
AC voltage (digital low pass filter - VFD)	600.0, 1000 V	±1%
LoZ mode AC voltage	600.0, 1000 V	±2.0%
AC voltage (mV mode)	60.00, 600.0 mV	±1.0%
DC voltage	60.00, 600.0, 1000 V	±1%
LoZ mode DC voltage	60.00, 600.0, 1000 V	±2.0%
DCV (mV mode)	60.00, 600.0 mV	±1%
Frequency	50.00 Hz to 400.0 Hz (ACA) 10.00 Hz to 400.0 Hz (ACV) 10.00 Hz to 500.0 Hz (ACV mV)	±1% ±1% ±1%
Resistance	600.0 k, 6.000 kΩ	±1.0%
Diode test	3.000 V	±0.9%
Temperature	-40°C to 400°C (-40°F to 752°F)	±1%
Continuity	< 30 Ω, 2 kHz buzzer	

### Wireless connectivity

METERLiNK®	Yes
------------	-----

### Display

Screen	3-5/8 digits, 6000 counts
Backlight	Yes
Auto power off	10 minutes (default)
Sampling rate	5 readings / second
Overload indication	"OL" or "-OL"

### Additional features

Data Logging and storage	Automatically log readings every 10 seconds. Data log files can be transferred via USB port.
Memory	8 GB internal memory
Operating temperature	0°C to 60°C (32°F to 140°F)
Operating relative humidity	Maximum relative humidity 80% for temperature up to 31°C (88°F) decreasing linearly to 50% relative humidity at 50°C (122°F)
Storage temperature	-30°C to 60°C (-22°F to 140°F) <80% RH (with battery removed)
Drop test	1 m (3.3 ft)
IP rating	IP40
Battery type	3× AA
Size (L × W × H)	251 × 80 × 40 mm (9.8 × 3.1 × 1.6 in)
Weight	300 g (10.6 oz)
Box contents	Test lead set, MC4 test leads, quick start guide, manual, soft carrying pouch, Type-K thermocouple

Specifications are subject to change without notice. For the most up-to-date specs, go to [www.flir.com](http://www.flir.com)

#### CORPORATE HEADQUARTERS

FLIR Systems, Inc.  
27700 SW Parkway Ave.  
Wilsonville, OR 97070  
USA  
PH: +1 866.477.3687

#### NASHUA

FLIR Systems, Inc.  
9 Townsend West  
Nashua, NH 03063  
USA  
PH: +1 866.477.3687

#### LATIN AMERICA

FLIR Systems Brasil  
Av. Antonio Bardella, 320  
Sorocaba, SP 18085-852  
Brasil  
PH: +55 15 3238 8070

#### CANADA

FLIR Systems, Ltd.  
3430 South Service Road, Suite 103  
Burlington, ON L7N 3J5  
Canada  
PH: +1 800.613.0507

[www.flir.com](http://www.flir.com)  
NASDAQ: FLIR

Equipment described herein is subject to US export regulations and may require a license prior to export. Diversion contrary to US law is prohibited. Imagery for illustration purposes only. Specifications are subject to change without notice. ©2019 FLIR Systems, Inc. All rights reserved. 8/19

19-1901-INS



The World's Sixth Sense®